

Different  
Thinking

---

Different  
Future

KOOKMIN  
UNIVERSITY

# CONTENTS

## Introduction

- 06** KMU at a Glance
- 07** KMU Introduction
- 08** Education Keywords
- 10** Recent Accomplishments

## Study Program

- 14** KMU Undergraduate Program
- 15** KMU Graduate Program

## Research

- 32** Academia-Industry Collaboration
- 34** Research Accomplishments
- 36** Affiliated Research Institutions

## Study Abroad

- 38** Study Abroad Program
- 40** Korean Language Program

## Seoul, Republic of Korea

## Greetings from the President

## Campus Map

## Transportation









# Introduction

KMU at a Glance

KMU Introduction

Education Keywords

Recent Accomplishments



# KMU at a Glance

1946

Establishment

14

Undergraduate Schools

14

Graduate Schools

49

Research Institutes

1,304

Faculty Members

440

Administrative Staff

942

Study Abroad (Outgoing)

Partner  
Universities



55

Countries



403

Universities



# KMU Introduction

Founded in 1946 as the firstly-established private institution in Korea after its liberation, Kookmin University has grown along with the country's vast development throughout the decades. The university has since expanded and diversified into 14 colleges and 14 graduate schools with 24,000 full-time students, 1,304 faculty members and 440 administrative staffs.

KMU provides interactive and convergent curriculum that educates students to develop and demonstrate their knowledge and skills in both inside and outside of the classroom. One of the strongest academic programs such as design, engineering, automotive engineering, and business administration is eager to cooperate with one another to achieve such goals.

KMU conducts robust research activities in various areas, including Information Technology, Automotive Engineering and Nano Technology. One of the Flagship projects is including carbon nanotube semiconductor, humanoid robots, unmanned automotive vehicle and 3D printing, all of which are geared towards the 4<sup>th</sup> Industrial Revolution Era.

KMU is dedicated to train its students to be global-minded. The university continue its efforts to foster globalized talents through educating globalization and multiculturalism among students. The university strives to create greater educational exchange opportunities with esteemed institutions throughout the world.

## Students

Total **24,793**



■ **21,327**  
Undergraduate Degree  
■ **3,466**  
Graduate Degree

## International Students

Total **2,416**



■ **1,746** Degree Program  
Undergraduate and Graduate  
■ **670** Non-degree Program  
Study Abroad and Korean Language



# KMU Education Keywords

## Practical Learning

**Preparation of students to become competent professionals needed by both industry and society**

- My Car Program
- Capstone Design
- Startup training

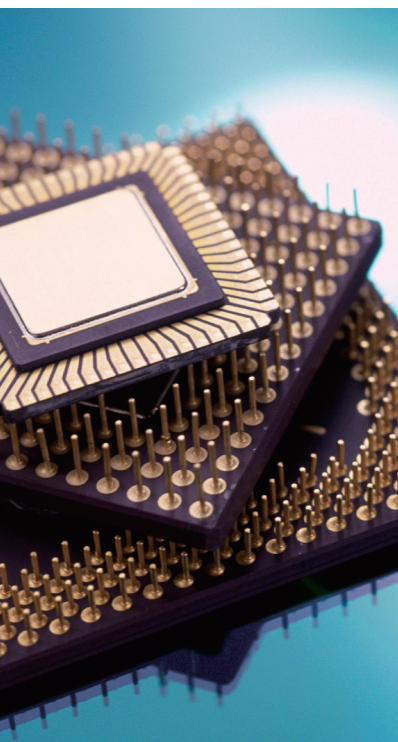
## 4<sup>th</sup> Industrial Revolution Era

- Humanoids and unmanned automotive vehicle
- The largest 3D printers
- Smart mirror with recognition of voice, motion and emotion
- Modularized smart fashion

## Software-Focused Education

**Selected as software-oriented university by the Ministry of Science, ICT and Future Planning**

- Mandatory computer programming language courses for all students
- Multidisciplinary software education for the fields of automotive, design and health-care
- Silicon Valley Internship program
- 10-week training program at the University of California, Irvine







## Academia-Industry Collaboration

**Research, provision of technological support, and operation of business support programs in collaboration with industry**

- GM PACE Institute
- Operation of a research center in cooperation with Hyundai Motor Group
- Academia-industry cooperative training program: KMU-Bosch Partnership, KMU-LG Electronics Partnership, Microsoft Creative Talent, Dassault Design Certification Center

## Civic Engagement

- Community Mapping Program (Facilities for the disabled, Safety Zone for children)
- Collaboration with Local Community (Culture & Art Festival)

## Interdisciplinary Education: Convergence

**Convergence of the humanities, technology and science**

- School of Humanities, Art, and Technology (HAT)
- Development of courses on 3D printing for humanities students





# KMU Recent Accomplishments

## Kookmin University Earns Top Grade on University Restructuring Assessment Conducted by the Ministry of Education

Received perfect scores on four indices. (number of faculty members, amount of scholarships, number of students, and employment rates of graduates) Kookmin University (KMU) was ranked Top Grade among 163 four-year universities across the nation on the University Restructuring Assessment conducted by the Ministry of Education.

## JoongAng Ilbo's 2017 University Evaluation

The university ranked 1<sup>st</sup> in the field of entrepreneurship education and 2<sup>nd</sup> in education-centered university.

## LINC (Leaders in Industry-University Cooperation) Plus Project

A project designed to provide support for the mutual development of academia and industry through the joint education and training of competent professionals and technological development tailored to local industrial demand.



## KMU Selected as a Software-oriented University

### **6-year project providing 2 billion KRW in government funding**

A project that aims to reform software education in accordance with the needs of the industry and produce competent experts in software and convergence.

## KMU Selected to Participate in University Startup Business Support Program

### **Up to 2 billion KRW in funding**

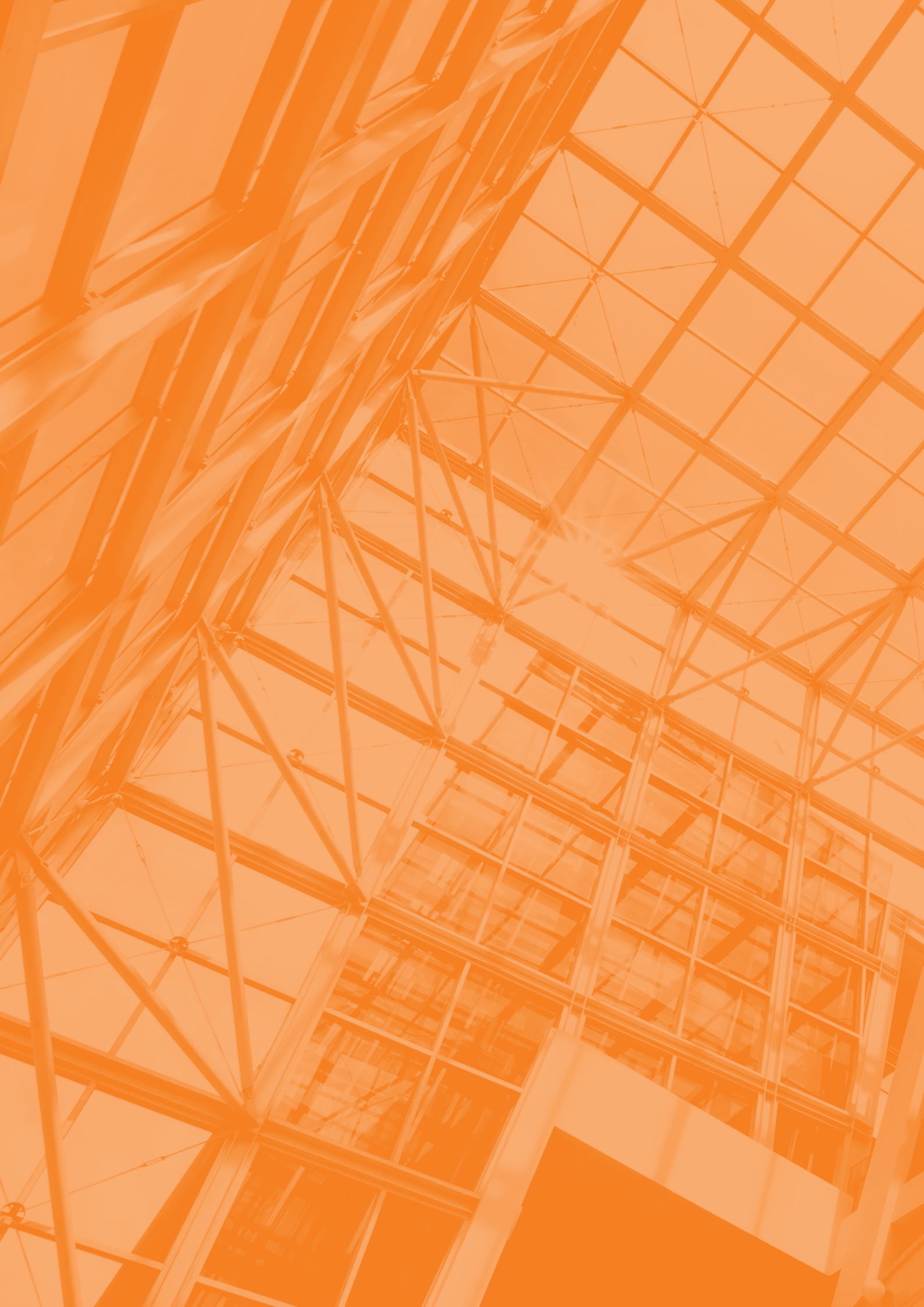
A project designed to support the development of universities equipped with outstanding startup infrastructure as startup incubators, providing everything from startup education and product discovery services to commercialization and follow-up support.

## BK21 Plus Project Aims to Produce Creative, Specialized, and Future-Oriented Professionals

Three teams dedicated to nurturing specialized professionals, and four teams to training creative, future-oriented personnel, funded with 6.2 billion KRW over a period of four years. The BK21 Plus Project is designed to support education and research geared towards the development of field-oriented knowledge and technology as well as the production of top-notch professionals at the graduate level.











# Study Program

Undergraduate Program

Graduate Program

# KMU Undergraduate Program

## Global College of Humanities and Area Studies

- Korean Language and Literature
- Korean as a Global Language
- English Language and Literature
- Chinese Literature and Linguistics
- Chinese Politics and Economy
- Korean History
- Eurasian Studies
- Japanese Studies

## College of Social Sciences

- Public Administration and Public Policy
- Political Science and Diplomacy
- Sociology
- Media and Communication
- Advertising & Public Relations
- Education

## College of Law

- Law

## College of Economics and Commerce

- Economics
- Commerce and Finance

## College of Business Administration

- Business Administration
- Business Analytics and Statistics
- Management Information Systems
- KMU International Business
- Finance and Insurance
- Accounting

## College of Creative Engineering

- Structural Materials
- Functional Materials
- Mechanical Systems Engineering
- Convergence Mechanical Engineering
- Mechanical and Energy Engineering
- Civil & Environmental Engineering
- Electronics Convergence Engineering
- Electronics & Information System Engineering
- Energy Electronics Convergence

## College of Computer Science

- Software

## College of Automotive Engineering

- Automotive Engineering
- Automobile and IT Convergence

## College of Sciences & Technology

- Forestry, Environment and Systems
- Forest Products and Biotechnology
- Nano and Electronic Physics
- Applied Chemistry
- Information Security, Cryptology, and Mathematics
- Food and Nutrition
- Advanced Fermentation Fusion Science and Technology

## College of Architecture

- Architecture

## College of Design

- Industrial Design
- Visual Communication
- Metalwork & Jewelry
- Ceramics
- Fashion Design
- Spatial Design
- Entertainment Design
- Automotive & Transportation Design

## College of Arts

### School of Music

- Voice
- Piano
- Orchestral Instrument  
(Violin, Viola, Cello, Contra Bass, Harp, Flute, Oboe, Clarinet, Bassoon, Saxophone, Horn, Trumpet, Bass Trombone, Tenor Trombone, Tuba, Euphonium, Percussion)

### School of Fine Arts

- Painting
- Sculpture

### School of Performing Arts

- Theatre
- Cinema
- Dance (Ballet, Korean Dance, Modern Dance)

## College of Physical Education

- Sports Education
- Sports Industry and Leisure
- Sports Health and Rehabilitation



# KMU Graduate Program

## Liberal Arts & Social Sciences

### Korean Language and Literature

- Korean Language
- Korean Literature
- Teaching Korean as a Foreign Language

### English Language and Literature

- English Language
- English Literature

### Chinese Language and Literature

- Chinese Literature and Linguistics

### Korean History

- Korean History ( I ): Prehistory~Goryeo Dynasty
- Korean History ( II ): Joseon Dynasty~Present

### Education

- Educational Administration and Lifelong Education
- Educational Psychology and School Counseling and Special Education
- Educational Measurement and Evaluation, Reunification Education
- Curriculum and Educational Technology

### Public Administration

- Public Administration, Public Policy

### Political Science & International Relations

- Political Thoughts and Theories
- Comparative Politics
- International Relations
- Political Management
- National Security Strategy

### Sociology

- Sociological Theories and Korean Society
- Future and Information Society
- Science, Technology and Environment
- Culture and Sports

### Communication

- Media and Communication
- Advertising and Public Relations

### International Area Studies

- International and Northeast Asian Studies
- Russian Area Studies
- Chinese Area Studies
- Japanese Area Studies

### Law

- Law
- North Korea & Unification Law

### Economics

### International Trade

- International Trade
- International Economics

### Business Administration Management

- Finance
- Marketing
- Service Management
- Insurance and Finance
- International Logistics
- Global Business Innovation

### Data Science

### Accounting

## Natural Sciences

### Mathematics

- Mathematics
- Information Security

### Physics

- Chemistry
- Physics and Analytical Chemistry
- Organic Chemistry
- Inorganic Chemistry
- Bio Chemistry
- Nano Chemistry

### Food & Nutrition

- Food Nutrition
- Food Biotechnology

### Bio & Fermentation Convergence Technology

### Forest Resources

### Forest Products & Biotechnology

## Engineering

### Advanced Materials Engineering

### Mechanical Engineering

### Mechanics and Design

### Civil and Environmental Engineering

- Structural Engineering
- Geotechnical Engineering
- Hydraulic Engineering
- Environmental Engineering

### Electronics Engineering

- Electronics Engineering
- Microwave Communication Engineering

### Computer Science

### Architecture

- Architecture
- Architectural System

## Arts & Sports

### Ceramics

### Metalwork & Jewelry

### Communication Design

### Entertainment & Contents Design

### Space Design

### Fashion

### Music

- Composition
- Voice
- Piano Performance
- Orchestral Instruments
- Collaborative Piano

### Fine Art

- Painting
- Sculpture
- Art Theory and Criticism
- Intermedia Art

### Performing Arts and Multimedia

- Theatre
- Dance
- Cinema Broadcast
- MFA in Acting

### Physical Education

- Humanities and Social Science in Sports
- Natural Science in Sports



KMU  
Degree Program

# Global Humanities and Area Studies

**Tel** +82-2-910-4353  
**Fax** +82-2-910-4359  
<http://cha.kookmin.ac.kr>



The Global College of Humanities and Area Studies was established to provide comprehensive education on humanities, which serve as the foundation of all learning, knowledge, and area studies, which is necessary for nurturing experts in global affairs. The college aims to train students to become talented professionals equipped with a good command of foreign languages and professional knowledge of specific regions on the basis of creativity, humanistic knowledge, and critical thinking skills.

	Undergraduate (Bachelor's Degree)	Graduate (Master's, Doctoral Degree)
<b>Korean Language and Literature</b>	<ul style="list-style-type: none"> <li>• Korean Language and Literature</li> <li>• Korean as a Global Language</li> </ul>	<ul style="list-style-type: none"> <li>• Korean Language</li> <li>• Korean Literature</li> <li>• Teaching Korean As a Foreign Language</li> </ul>
<b>English Language and Literature</b>	<ul style="list-style-type: none"> <li>• English Literature and Linguistics</li> <li>• English for Global Communication</li> </ul>	<ul style="list-style-type: none"> <li>• English Language</li> <li>• English Literature</li> </ul>
<b>Chinese Studies</b>	<ul style="list-style-type: none"> <li>• Chinese Literature and Linguistics</li> <li>• Chinese Politics and Economy</li> </ul>	<ul style="list-style-type: none"> <li>• Chinese Literature and Linguistics</li> <li>• Chinese Area Studies</li> </ul>
<b>Korean History</b>	<ul style="list-style-type: none"> <li>• Korean History</li> </ul>	<ul style="list-style-type: none"> <li>• Korean History ( I ) : Prehistory~Goryeo Dynasty</li> <li>• Korean History ( II ) : Joseon Dynasty~Present</li> </ul>
<b>Eurasian Studies</b>	<ul style="list-style-type: none"> <li>• Eurasian Studies</li> </ul>	<ul style="list-style-type: none"> <li>• Russian Area Studies</li> </ul>
<b>Japanese Studies</b>	<ul style="list-style-type: none"> <li>• Japanese Studies</li> </ul>	<ul style="list-style-type: none"> <li>• Japanese Area Studies</li> </ul>
<b>International Area Studies</b>	-	<ul style="list-style-type: none"> <li>• International and Northeast Asian Studies</li> </ul>



KMU  
Degree Program

# Social Sciences

**Tel** +82-2-910-4423  
**Fax** +82-2-910-4429  
<http://social.kookmin.ac.kr/en>



The College of Social Sciences aims to teach students to acquire a broad theoretical background and research competence in social sciences. It trains the students to be able to use various perspectives and research methods for analyzing social phenomena and policy making. Methodologically, the faculty seeks a balance between quantitative and qualitative research methods.

	Undergraduate (Bachelor's Degree)	Graduate (Master's, Doctoral Degree)
<b>Public Administration and Public Policy</b>	<ul style="list-style-type: none"> <li>Public Administration</li> <li>Public Policy</li> </ul>	<ul style="list-style-type: none"> <li>Public Administration</li> <li>Public Policy</li> </ul>
<b>Political Science and International Relations</b>	<ul style="list-style-type: none"> <li>Political Science and International Relations</li> </ul>	<ul style="list-style-type: none"> <li>Political Thoughts and Theories</li> <li>Comparative Politics</li> <li>International Relations</li> <li>Political Management</li> <li>National Security Strategy</li> </ul>
<b>Sociology</b>	<ul style="list-style-type: none"> <li>Sociology</li> </ul>	<ul style="list-style-type: none"> <li>Sociological Theories and Korean Society</li> <li>Future and Information Society</li> <li>Science, Technology and Environment</li> <li>Culture and Sports</li> </ul>
<b>Communication</b>	<ul style="list-style-type: none"> <li>Media and Communication</li> <li>Advertising &amp; Public Relations</li> </ul>	<ul style="list-style-type: none"> <li>Media &amp; Communication</li> <li>Advertising &amp; Public Relations</li> </ul>
<b>Education</b>	<ul style="list-style-type: none"> <li>Education</li> </ul>	<ul style="list-style-type: none"> <li>Educational Administration and Lifelong Education</li> <li>Educational Psychology, School Counseling and Special Education</li> <li>Educational Measurement and Evaluation, Reunification Education</li> <li>Curriculum and Educational Technology</li> </ul>

## ◆ Specialized Graduate Program (Master's Degree)

Graduate School of Public Administration  
 Graduate School of Politics and Leadership  
 Graduate School of Education



KMU  
Degree Program

# Law

**Tel** +82-2-910-4482  
**Fax** +82-2-910-4489  
<http://law.kookmin.ac.kr>



The College of Law began offering their curriculum in 1949, when the main university campus first opened its doors. The College confers the degrees of Bachelor of Law, Master's of Law, and Doctor of Law to those who have completed the degree requirements successfully. The College of Law has gained a national reputation for its professional legal training and major legal research. It features a Law Library, a Legal Research Center, and a Legal Aid Counseling Center to support the faculty and students in their intensive studies and legal practices.

	Undergraduate (Bachelor's Degree)	Graduate (Master's, Doctoral Degree)
<b>Law</b>	<ul style="list-style-type: none"> <li>• Public Law</li> <li>• Private Law</li> </ul>	<ul style="list-style-type: none"> <li>• Law</li> <li>• North Korea &amp; Unification Law</li> </ul>
<b>Business Law</b>	<ul style="list-style-type: none"> <li>• Business Law</li> </ul>	-

◆ **Specialized Graduate Program (Master's Degree)**

Graduate School of Legal Affairs



KMU  
Degree Program

# Economics & Commerce

**Tel** +82-2-910-4513  
**Fax** +82-2-910-4519  
<http://kyungsang.kookmin.ac.kr/en/>



The College of Economics and Commerce consists of two departments, the Department of Economics and the Department of Commerce and Finance. Our students have advanced in various fields such as the financial and trade business, the manufacturing industry, and the government sector after graduation, and have achieved very successful careers in each field. Due to the continued exceptional research of professors in our two departments, we have received outstanding results in nation-wide scientific performance evaluations.

	Undergraduate (Bachelor's Degree)	Graduate (Master's, Doctoral Degree)
<b>Economics</b>	<ul style="list-style-type: none"> <li>• Economics</li> </ul>	<ul style="list-style-type: none"> <li>• Economics</li> </ul>
<b>Commerce and Finance</b>	<ul style="list-style-type: none"> <li>• Commerce and Finance</li> </ul>	<ul style="list-style-type: none"> <li>• International Trade</li> <li>• International Economics</li> </ul>



KMU  
Degree Program

# Business Administration

**Tel** +82-2-910-5202  
**Fax** +82-2-910-5209  
<http://biz.kookmin.ac.kr/en/>



University education, along with its curriculum, lectures, and student support, should respond to the demands of time. Transforming the subject-oriented education system, which many universities still maintain, into a student-centered one was accomplished by the College of Business Administration in 2006. We have reformed the curriculum in the major field of study so that our students can develop competence based on the confidence acquired in the earlier stages. The college is also investing its resources in international exchange programs by which our students can utilize their specialized knowledge and familiarize themselves with international settings. This is the goal that we continue to achieve: to produce managers of the 21st century by means of institutional adaptability and flexibility.

	Undergraduate (Bachelor's Degree)	Graduate (Master's, Doctoral Degree)
<b>Business Administration</b>	<ul style="list-style-type: none"> <li>• Business Administration</li> <li>• Business Analytics and Statistics</li> </ul>	<ul style="list-style-type: none"> <li>• Management</li> <li>• Marketing</li> <li>• Service Management</li> <li>• Global Business Innovation</li> <li>• International Logistics</li> </ul>
<b>Management Information Systems</b>	<ul style="list-style-type: none"> <li>• Information Management</li> </ul>	<ul style="list-style-type: none"> <li>• Data Science</li> </ul>
<b>Finance and Accounting</b>	<ul style="list-style-type: none"> <li>• Finance and Insurance</li> <li>• Accounting</li> </ul>	<ul style="list-style-type: none"> <li>• Finance</li> <li>• Insurance and Finance</li> <li>• Accounting</li> </ul>
<b>KMU International Business School</b>	<ul style="list-style-type: none"> <li>• International Business</li> </ul>	-
<b>Corporate Management</b>	<ul style="list-style-type: none"> <li>• Corporate Management</li> </ul>	-

◆ **Specialized Graduate Program (Master's Degree)**

Graduate School of Business Administration  
 Graduate School of Global Entrepreneurship

◆ **Professional Graduate Program (Master's Degree)**

Graduate School of Business IT



KMU  
Degree Program

# Creative Engineering

**Tel** +82-2-910-4653  
**Fax** +82-2-910-4655  
<http://eng.kookmin.ac.kr>



The College of Creative Engineering has strengthened the research competitiveness specialized in each field of engineering by winning a variety of national research projects. Such projects include Priority Research Center Program funded by the Ministry of Science, the Brain Korea 21 programs (BK21) supported by the Ministry of Education. In addition, we were selected for 'University for Creative Korea (CK-II) Project' in 2014. We will exert our utmost efforts to cultivate creative engineers through the provision of specialized curriculum and engineering research.

	Undergraduate (Bachelor's Degree)	Graduate (Master's, Doctoral Degree)
<b>Advanced Materials Engineering</b>	<ul style="list-style-type: none"> <li>• Metallurgical and Structural Materials</li> <li>• Electronic and Functional Materials</li> </ul>	<ul style="list-style-type: none"> <li>• Advanced Material Engineering</li> </ul>
<b>Mechanical Engineering</b>	<ul style="list-style-type: none"> <li>• Mechanical Systems Engineering</li> <li>• Convergence Mechanical Engineering</li> <li>• Mechanical and Energy Engineering</li> </ul>	<ul style="list-style-type: none"> <li>• Mechanical Engineering</li> <li>• Mechanics and Design</li> </ul>
<b>Civil and Environmental Engineering</b>	<ul style="list-style-type: none"> <li>• Civil and Environmental Engineering</li> </ul>	<ul style="list-style-type: none"> <li>• Structural Engineering</li> <li>• Geotechnical Engineering</li> <li>• Hydraulic Engineering</li> <li>• Environmental Engineering</li> </ul>
<b>Electrical Engineering</b>	<ul style="list-style-type: none"> <li>• Electronics Convergence Engineering</li> <li>• Electronics &amp; Information System Engineering</li> <li>• Energy Electronics Convergence</li> </ul>	<ul style="list-style-type: none"> <li>• Electronics Engineering</li> <li>• Microwave Communication Engineering</li> </ul>



KMU  
Degree Program

# Automotive Engineering

**Tel** +82-2-910-5502  
**Fax** +82-2-910-5509  
<http://auto.kookmin.ac.kr>



In order to cultivate automotive experts who represent the status of Korea, the world's top four power in automobile industry, the College of Automotive Engineering was established in 2014 as the first automobile-specialized college in Korea under the full support from the Korean government and automobile businesses. The college is composed of two departments; The Department of Automotive Engineering that was established in 1992 and the newly founded Department of Automobile and IT Convergence.

	Undergraduate (Bachelor's Degree)	Graduate (Master's, Doctoral Degree)
<b>Automotive Engineering</b>	• Automotive Engineering	-
<b>Automobile and IT Convergence</b>	• Automobile and IT Convergence	-

◆ **Professional Graduate Program (Master's Degree/Doctoral Degree)**

Graduate School of Automotive Engineering

◆ **Specialized Graduate Program (Master's Degree)**

Graduate School of Automotive Industry



KMU  
Degree Program

# Computer Science

**Tel** +82-2-910-4790  
**Fax** +82-2-910-4868  
**http://cs.kookmin.ac.kr**



The College of Computer Science aims to train globally competitive software professionals with a innovative curriculum based on open source software. Up to the second year, students are expected to gain strong basic software knowledge covered in fundamental undergraduate courses. Until graduation, students learn their major in more depth by selecting multiple specialized tracks that reflect demands from the industry, such as BigData/Machine Learning, Media/Entertainment, IoT, Web/Information Security, and Enterprise Software. For senior students, a project-oriented latest technology and capstone design project courses allow students to demonstrate the knowledge and software development skills learned in the undergraduate courses.

	Undergraduate (Bachelor's Degree)	Graduate (Master's, Doctoral Degree)
Software	• Software	• Computer Science



KMU  
Degree Program

# Science and Technology

**Tel** +82-2-910-4803  
**Fax** +82-2-910-4809  
<http://cst.kookmin.ac.kr/>



The College of Science and Technology aims to produce creative yet practical professionals who are capable of developing new technologies and driving progress and growth based on basic scientific theories. It also trains students to serve as experts who can contribute to the development of forestry and forest products, including the conservation and effective and balanced use and development of forest resources and the promotion of forestry through the research and exploration of forest resources. In addition, each department strives to increase its capacity to educate and conduct research on information technology, nanotechnology, biotechnology, environmental technology and other core technologies through interdisciplinary collaboration.

	Undergraduate (Bachelor's Degree)	Graduate (Master's, Doctoral Degree)
<b>Forestry, Environment, and Systems</b>	• Forestry, Environment, and Systems	• Forest Resources
<b>Forest Products and Biotechnology</b>	• Forest Products and Biotechnology	• Forest Products & Biotechnology
<b>Nano and Electronic Physics</b>	• Nano and Electronic Physics	• Physics
<b>Applied Chemistry</b>	• Applied Chemistry	• Physics and Analytical Chemistry • Organic Chemistry • Inorganic Chemistry • Bio Chemistry • Nano Chemistry
<b>Food and Nutrition</b>	• Food and Nutrition	• Food Nutrition • Food Biotechnology
<b>Information Security, Cryptology, and Mathematics</b>	• Information Security, Cryptology, and Mathematics	• Mathematics • Information Security
<b>Advanced Fermentation Fusion Science and Technology</b>	• Advanced Fermentation Fusion Science and Technology	• Bio and Fermentation Convergence • Technology



KMU  
Degree Program

# Physical Education

**Tel** +82-2-910-4883  
**Fax** +82-2-910-4789  
<https://sport.kookmin.ac.kr/en/>



The College of Physical Education is designed to study theories in depth on sports and physical education through various educational tools and courses as well as to train physical fitness by offering diverse activity classes and various sports. Through this program it is intended to develop intelligence, moral excellence, and physical fitness in students, thus preparing them to become leaders in this area of discipline in terms of sports science and sports industry.

With the support of excellent faculty members, we have taught practical skills and theories through up-to-date curricula cultivating sports scientists, sports managers and personal trainers, and promoting health for the general population.

	Undergraduate (Bachelor's Degree)	Graduate (Master's, Doctoral Degree)
<b>Physical Education</b>	<ul style="list-style-type: none"> <li>• Sport Education</li> <li>• Sport Industry and Leisure</li> <li>• Sports Health and Rehabilitation</li> </ul>	<ul style="list-style-type: none"> <li>• Humanities and Social Science in Sports</li> <li>• Natural Science in Sports</li> </ul>

◆ **Specialized Graduate Program (Master's Degree)**

Graduate School of Sports Industry



KMU  
Degree Program

# Architecture

**Tel** +82-2-910-4112  
**Fax** +82-2-910-4113  
<http://archi.kookmin.ac.kr/en/>



There was once a time when building in a quick, high, and grand manner was deemed as the objective of architectural engineering. This resulted in the existence of buildings that do not take into consideration human aspects nor the element of design.

The College of Architecture at Kookmin University is equipped with an independent educational environment known as the Design-oriented 5-year College of Architecture as the system of cultivating the international-level architects by specializing in architectural design in Korea so as to correct the wrong architectural culture.

	Undergraduate (Bachelor's Degree)	Graduate (Master's, Doctoral Degree)
Architecture	<ul style="list-style-type: none"> <li>• Architectural Design</li> <li>• Architectural Systems</li> </ul>	<ul style="list-style-type: none"> <li>• Architecture</li> <li>• Architectural Systems</li> </ul>



KMU  
Degree Program

# Design

**Tel** +82-2-910-4583  
**Fax** +82-2-910-4589  
<http://design.kookmin.ac.kr/en/>



While other university's design programs remained under their colleges of Fine Art, our professors stressed the importance of design in choosing the college's name, The Faculty of Design, in 1975 and then The College of Design in 1980. This set Kookmin University's design program apart from all others. Our determined design educators built a college with a new curriculum and teaching method based upon student experience and motivation. Today, we support each student's creative ideas and experimental concepts with open minds. Consequently, we are especially well known for our teaching know-how. All of these efforts have formed the strong identity the College of Design has today.

	Undergraduate (Bachelor's Degree)	Graduate (Master's, Doctoral Degree)
<b>Industrial Design</b>	• Industrial Design	-
<b>Visual Communication Design</b>	• Visual Communication Design	• Communication Design
<b>Metalwork and Jewelry</b>	• Metalwork and Jewelry	• Metalwork and Jewelry
<b>Ceramics</b>	• Ceramics	• Ceramic Craft
<b>Fashion Design</b>	• Fashion Design	• Fashion
<b>Spatial Design</b>	• Spatial Design	• Space Design
<b>Entertainment Design</b>	• Entertainment Design	• Entertainment and Contents Design
<b>Automotive &amp; Transportation Design</b>	• Automotive & Transportation Design	-

◆ **Specialized Graduate Program (Master's Degree)**

Graduate School of Design

◆ **Professional Graduate Program (Master's Degree/Doctoral Degree)**

Graduate School of Techno Design



**KMU**  
**Degree Program**

# Arts

**Tel** +82-2-910-4463  
**Fax** +82-2-910-4469  
<http://art.kookmin.ac.kr/en/>



The College of Arts provides an ideal environment for intensive training and the development of talent. It is our goal to cultivate students' natural abilities so that they will contribute to their art to society, not only in Korea, but around the world as well.

We encourage our students to spearhead the artistic trends of the future that will shape the world. We offer modern facilities and a well-rounded curriculum for our students to realize their potential and to take risks as they hone their innovative capabilities. It is our goal to bring out the Individual talents of our students so that they can have a professional life in the art world.

	Undergraduate (Bachelor's Degree)	Graduate (Master's, Doctoral Degree)
<b>Music</b>	<ul style="list-style-type: none"> <li>• Voice</li> <li>• Piano</li> <li>• Composition</li> <li>• Orchestral Instruments</li> </ul>	<ul style="list-style-type: none"> <li>• Voice</li> <li>• Piano Performance</li> <li>• Collaborative Piano</li> <li>• Composition</li> <li>• Orchestral Instruments</li> </ul>
<b>Fine Arts</b>	<ul style="list-style-type: none"> <li>• Painting</li> <li>• Sculpture</li> </ul>	<ul style="list-style-type: none"> <li>• Painting</li> <li>• Sculpture</li> <li>• Art Theory and Criticism</li> <li>• Intermedia Art</li> </ul>
<b>Performing Arts</b>	<ul style="list-style-type: none"> <li>• Theater</li> <li>• Film</li> <li>• Dance</li> </ul>	<ul style="list-style-type: none"> <li>• Theatre</li> <li>• Cinema Broadcast</li> <li>• Dance</li> <li>• MFA in Acting</li> </ul>

◆ **Specialized Graduate Program (Master's Degree)**

Graduate School of Total Arts



KMU  
Degree Program

# Humanities, Art & Technology

**Tel** +82-2-910-6476



The School of Humanities, Art & Technology (HAT) was established to provide students with open-minded, hands-on education through the convergence of the humanities, art, and technology, so that they may go on to become well-rounded professionals capable of creating greater value in their respective fields. The school offers an undergraduate program consisting of interdisciplinary courses that bring together seemingly unrelated fields, such as the humanities, art, and natural science, which allows students in their junior and senior years to take courses in those fields to satisfy the requirements of their double or interdisciplinary major or minor programs.

It consists primarily of two programs: the “school-designed interdisciplinary major program,” which is designed by the school with consideration of social demand, and the “self-designed interdisciplinary major program,” which allows students to design the program to suit their own specific academic goals.

# Joint Graduate Program

Joint Graduate Programs are an official master's and doctoral program designed to execute joint research operated by two or more relevant departments.

Program	Degree		Major	Relevant Departments (Schools)
	Master's	Doctoral		
<b>Cross-Cultural Studies</b>	○	○	<ul style="list-style-type: none"> <li>• Science of Feelings</li> <li>• Cultural Study of Arts</li> <li>• Cultural Socio-Psychology</li> <li>• Xcultural Study of Korean Style</li> </ul>	All departments
<b>Nano Science &amp; Technology</b>	○	○	<ul style="list-style-type: none"> <li>• Nano-Material</li> <li>• Nano-Electron</li> <li>• Nano-Physics</li> <li>• Nano-Chemistry</li> </ul>	Related departments
<b>Applied Information Technology</b>	○	○	<ul style="list-style-type: none"> <li>• Applied Information Technology</li> </ul>	Electronics, Information & Telecommunication Engineering Major, Space Information Dept, Natural Science & Primary Industry Dept.
<b>Conservation of Cultural Heritage</b>	○	-	<ul style="list-style-type: none"> <li>• Department of Conservation of Cultural Heritage</li> </ul>	Department of Humanities & Social Sciences (Departments related to Korean culture history, Architecture, Archaeology & Art History, Museology, Cultural property) Department of Science & Engineering (Departments related to Forest Products & Biotechnology, Forest Science, Advanced Materials Engineering, biology, Chemistry)
<b>Integrative Biomedical Science and Engineering</b>	○	-	<ul style="list-style-type: none"> <li>• Biomedical Science</li> <li>• Biomedical Engineering</li> </ul>	Departments related to Mechanical Engineering, Mechanics and Design, Advanced Materials Engineering, Electronics Engineering, Computer Science, Department of Bio & Nano Chemistry, Advanced Fermentation Fusion Science and Technology, Food & Nutrition
<b>Sports Engineering Convergence</b>	○	-	<ul style="list-style-type: none"> <li>• Convergence Kinesiology</li> <li>• Convergence Mechanical Engineering</li> </ul>	Physical Education, Mechanical Engineering, Mechanics and Design
<b>Financial Information Security</b>	○	○	<ul style="list-style-type: none"> <li>• Financial Security</li> <li>• Information Security</li> </ul>	Mathematics, Business Administration, Business IT, Computer Science, Department of Financial Information Security
<b>Secured Smart Electric Vehicle</b>	○	○	<ul style="list-style-type: none"> <li>• Secured Smart Electric Vehicle</li> </ul>	Electronics Engineering, Automotive Engineering
<b>Convergence Design and Technology</b>	○	-	<ul style="list-style-type: none"> <li>• Convergence Design</li> <li>• Convergence Electronic, Materials and Computer Science</li> </ul>	Advanced Materials Engineering, Computer Science, Electronics Engineering, Fashion Design, Industrial Design





# Research

Academia-Industry Collaboration

Research Accomplishments

Affiliated Research Institutions

# Academia-Industry Collaboration



## **GM PACE (Partners for the Advancement of Collaborative Engineering Education) Institute**

The GM PACE Institute was established with the aim of training talented engineers capable of leading the Korean automobile industry in the future. It provides KMU with car-related computer hardware and software, valued at 460 billion KRW, with which the university offers specialized convergence education in car engineering and design.

---

## **Infineon Technologies AG**

### **KMU-Infineon Partnership**

KMU offers hands-on courses with the support of Infineon Technologies, a Germany-based leader of the global automotive semiconductor market.

---

## **Bosch** **BOSCH**

### **KMU-Bosch Partnership**

Courses are offered every semester for junior and senior students majoring in automotive engineering, automotive and ICT convergence with the support of Bosch, which has provided all parts and equipment necessary for the creation of an industry-standard automotive engineering lab.

---

## **ETAS GmbH**

### **ETAS Training Center**

With the establishment of the KMU-ETAS Training Center on campus, KMU will invest 2 billion KRW to build a system for R&D and education based on LABCAR (HiL simulation tool) and ASCET (model-based software development tool), with the support of ETAS.

---

## **Microsoft** **Microsoft**

### **Microsoft Creative Talent**

Designed to produce creative experts with a global mindset, this joint project focuses on topics relevant to academia-industry cooperation, including creativity, entrepreneurship, multidisciplinary capstone design, and the Microsoft experience program.

---

## **Apple**

### **Apple Authorized Training Center (AATC)**

The AATC is an educational institute, operated and supervised by an Apple-designated agency, that offers Apple's certified education program and conducts its certified exams. The fact that the Department of Entertainment Design has been chosen to operate an AATC means that the university has satisfied Apple's rigid criteria in relation to facilities and human resources.



## Dassault

### Dassault Design Certification Center

The Dassault Design Certification Center was created to foster a design community by offering cooperative programs on medical device, aerospace equipment, and robot design; the basics of CATIA V6 and the global design process; and the Dassault Systèmes, along with internship programs. The center also provides support for 3D design experts.

## Hyundai Motor Group

### Hyundai Motor Group Contract Program

Scholarship for 20 students and support for automobile-related field training and employment after graduation.

## Designated as a Joint Hyundai Motor research center

### NVH (Noise, Vibration, and Harshness)

Designated as a joint Hyundai Motor research center in recognition of the innovative research achievements made by the NVH & Sound Design Lab of the KMU Department of Automotive Engineering (supervisor: Kook Hyung-Seok) in the area of noise, vibration and automotive NVH.

### Next-generation Steering System

Designated as a joint Hyundai Motor research center in recognition of the innovative research achievements made by the Intelligent Vehicle Design Lab (IVDL, supervisor: Park Ki-Hong) of the KMU Department of Automotive Engineering in the area of next-generation steering systems.

As a part of the academia-industry cooperative program based on the satellite lab concept, the joint research center aims to take academia-industry cooperation one step further by training future leaders in automobile technology through sustainable partnerships and joint research efforts.

## Samsung Electronics

### Samsung Network Power Center

- **Joint R&D:** Based on an agreement, KMU and Samsung Electronics are expected to secure experts, eliminate defects in quality control through cooperation, conduct groundbreaking integrated research on new types of power modules, and develop standardized technology.

## LG Electronics

### KMU-LG Electronics partnership

- **KMU-LG Electronics Partnership:** Department of Mechanical Systems Engineering and Department of Automotive Engineering.
- **LG Design Class:** Department of Industrial Design and Department of Visual Communication Design.
- **Joint R&D:** An agreement entered into by KMU and the LG Electronics' EC Division regarding cooperation on the development of technology related to the HVAC system and parts for electric vehicles and the training of experts in related areas.

## LG Innotek

### KMU-LG Innotek Partnership

- **LG Innotek Partnership:** automotive engineering and automobile and IT convergence.
- **Joint R&D:** Cooperation on R&D activities related to automotive electronics and the training of experts in related areas.

## IBM

An academia-industry cooperative program designed to provide students and faculty with opportunities to experience IBM solutions and the necessary training materials and software through the IBM Academic Initiative.

# Research Accomplishments

Development of a carbon nanotube semiconductor that is five times faster than silicon semiconductors

**Choi Sung-Jin** | Department of Electrical Engineering

Development of a high-performance semiconductor device that consumes less energy but is much faster than semiconductors currently on the market

**Kim Dong-Myong** | Department of Electrical Engineering

Development of a three-dimensional graphene material that increases the efficiency with which thermal energy is converted into electricity by 1,200 times

**Lee Hyun-Jung** | Department of Advanced Materials Engineering

Designated as a project leader in energy technology development by the Ministry of Trade, Industry and Energy

Research team led by **Jang Sung-Yeon** | Department of Applied Chemistry

Led the Korean research team that presented the largest number of research papers (6) at the Magnetism and Magnetic Materials (MMM) Conference held by the American Physical Society

Research team led by **Kim Chul-Sung** | Department of Nano and Electronic Physics





Published a research paper titled “Real-Time Estimation of Distance Traveled by Cart Using Smartphones” in the IEEE Sensors Journal that was ranked among the top 25 most downloaded papers

Research team led by **Jeong Gu-Min** | Department of Electrical Engineering

Installed a bus stop equipped with an unmanned battery swapping system (BSS) for electric buses and launched the operation of a commercial electric bus

**Park Jun-Seok** | Department of Electrical Engineering

Selected to be an Engineering Research Center (ERC) in the areas of computers, software, communications, and information technology convergence by the Ministry of Science, ICT and Future Planning in 2016

**Research team consisting of professors of the Department of Electrical Engineering and Department of Bio and Nano Chemistry**

Successfully completed Phase 2-B of a clinical trial for a biomedical product for the treatment of cervical neoplasia

**Sung Moon-Hee** | Department of Bio Fermentation Convergence Technology



# Affiliated Research Institutions

## Humanities and Social Sciences

Institute of Language and Literature Research  
 Institute of Korean Studies  
 Institute of Japanese Studies  
 Institute of Eurasian Studies  
 Center for Interdisciplinary Research on China  
 Research Institute for Politics and Strategy  
 Future Korea Institute  
 Educational Research Institute  
 Institute of Social Sciences  
 The Institute for Public Affairs  
 Center for Cross-cultural Studies  
 Legal Research Institute  
 Kookmin Institute for Strategic Governance  
 Institute of Information and Law  
 Finance Law Institute  
 Institute of Sports Betting Problems

## Business

Kookmin Institute of Economic Research  
 Kookmin Institute of Business Research  
 Kookmin Information Technology Research Institute  
 Kookmin Research Institute for Finance and Services  
 Creative Management Research Institute

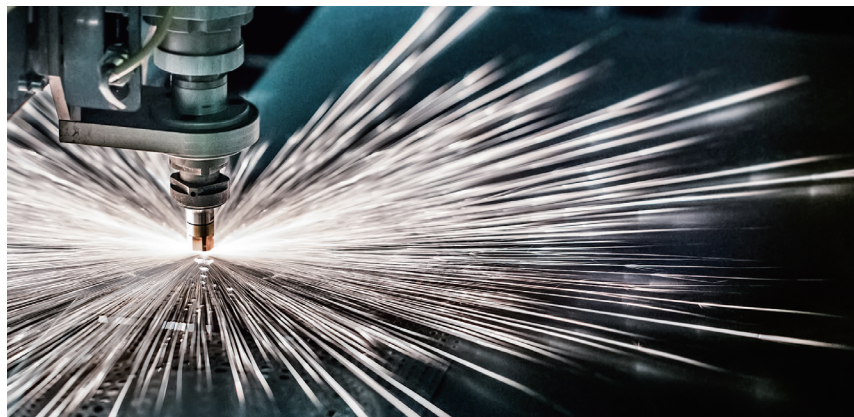
## Engineering & Science

Institute of Engineering Technology  
 Structural Safety Research Center

RF/Microwave Monolithic IC Research Institute  
 Automotive Technology Research Institute  
 Kookmin Research Institute of Auto Service Assessment  
 The Basic Science Institute  
 Institute of Sport Science  
 Institute of Forest Science  
 Institute of Telematics  
 Water and Environment Research Institute  
 Institute of Bio-Fusion Science and Technology  
 Nanoscale and Technology Research Institute  
 Research Center for Wellbeing Environmental Technology  
 Center for Advanced Materials Technology  
 Kookmin Power Electronics Center  
 Institute of Spin Quantum Mössbauer Spectroscopy  
 Cryptography & Information Security Institute  
 Institute of Molecular Recognition Nano Technology  
 Food Research Center for Disease Prevention  
 Computer Engineering Laboratory  
 Open Source Software Research Center

## Arts and Design

Composite Arts Institute  
 Institute of Techno Design  
 Center for Super Precision & Innovative Design  
 Oriental Culture & Design Center  
 Institute of Architecture and Urban Studio  
 Institute of Craft Culture and Industry  
 Institute of Environmental Design







# Study Abroad

Study Abroad Program  
Korean Language Program

SUNGKOK GLOBAL LECTURE

# Study Abroad Program

Kookmin University invites more than 500 exchange students with our 150 partner universities every year. International students can join Kookmin University for a semester or two and take courses taught in English. In addition, Kookmin University provides Korean language classes and culture programs such as Korean Tea Ceremony to give students a better understanding of Korean culture.

Moreover, while we are located in the heart of Seoul, we provide affordable accommodations for our students. Surrounded by the Bukhansan National Mountain Park, Kookmin campus is an ideal place for international students to study in Seoul.

## Russia & CIS (5 Countries) 28

Belarus 3  
Kazakhstan 5  
Kyrgyzstan 1  
Russia 16  
Uzbekistan 3

## Asia (13 Countries) 153

Cambodia 1  
China 67  
India 8  
Indonesia 4  
Japan 27  
Malaysia 8  
Mongolia 5  
Nepal 1  
Philippines 2  
Singapore 3  
Taiwan 8  
Thailand 8  
Vietnam 11

## Europe (19 Countries) 103

Belgium 2  
Czech 5  
Denmark 2  
Finland 3  
France 20  
Germany 16  
Greece 1  
Iceland 1  
Ireland 3  
Italy 7  
Lithuania 1  
Netherlands 4  
Norway 1  
Romania 2  
Spain 10  
Sweden 3  
Switzerland 1  
Turkey 9  
United Kingdom 12

## Middle East & Africa (4 Countries) 10

Egypt 1  
Kuwait 1  
Republic of South Sudan 1  
Saudi Arabia 7

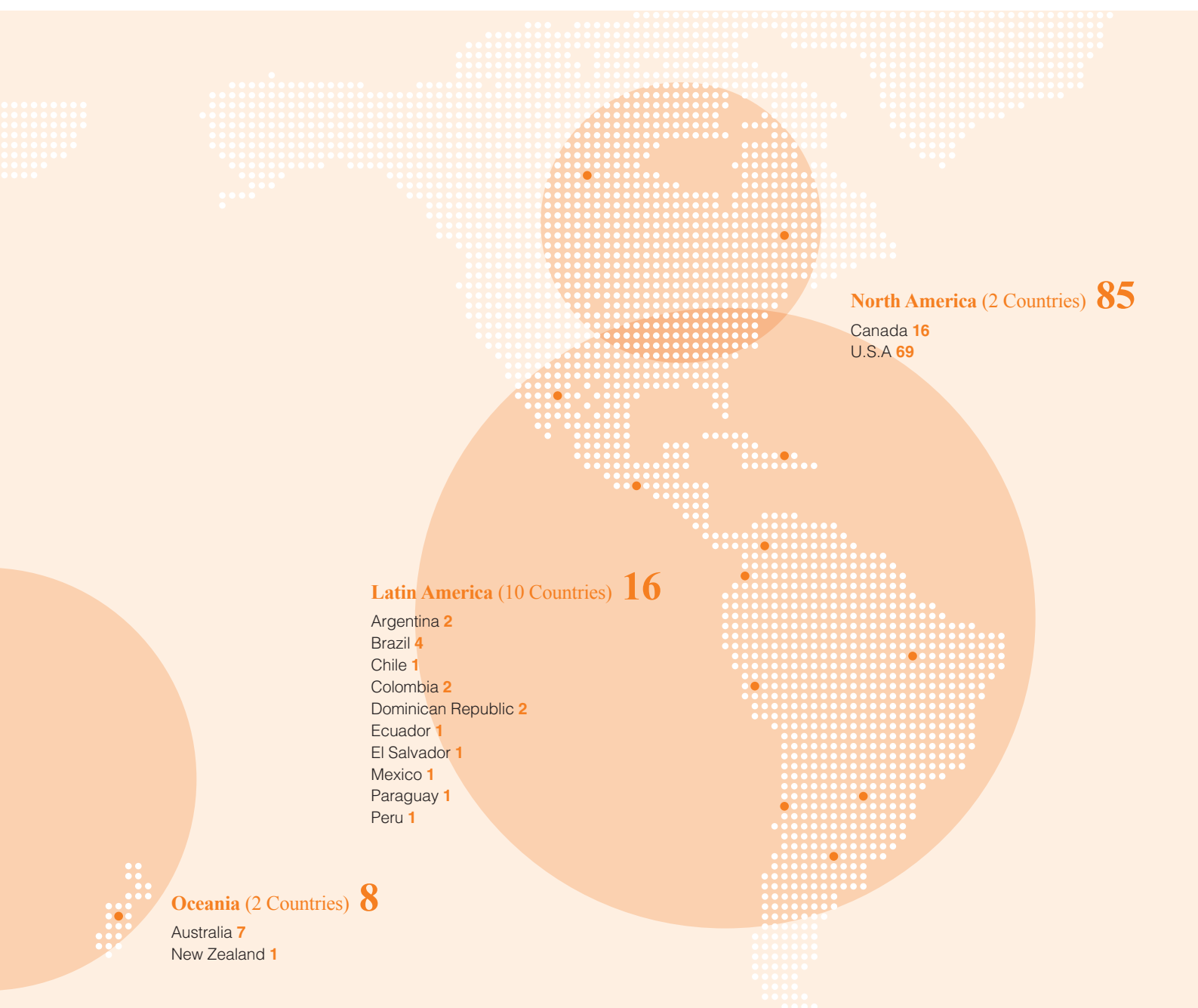


## Partner Universities

**55** Countries | **403** Universities

## Number of Students (Inbound/Outbound)

	Incoming Students	Outgoing Students
Asia	207	428
Russia & CIS	43	51
Europe	99	193
North America	18	237
Latin America	9	6
Oceania	1	27
<b>Total</b>	<b>377</b>	<b>942</b>



# Korean Language Program

Korean Language Education was started to help foreign students learn Korean Language and culture. About 1,800 students from more than 15 countries are currently studying at the Korean Language Center.

The Korean Language Center is producing many prominent students by providing them not only with systematic and dynamic educational courses that reflect versatile demands of foreign students but also with effective teaching methods from exceptional faculty members. Furthermore, it makes the best use of the books and various multimedia materials to facilitate easy understanding, while offering diversified programs intended to assist foreign students currently residing in Korea. From this point onwards, The Korean Language Center of KMU IIE will be exerting the necessary efforts to become established as a representative Korean language institute in Korea by being equipped with an highly advanced educational environment and multimedia facilities and by developing more effective educational methods and materials.

The Korean Language Center offers regular and short-term courses.

The regular course is designed to provide intensive instruction for students in speaking, listening, writing and reading skills. The 10-week course meets five times a week for four hours each day and is divided into six levels: beginner 1, beginner 2, intermediate 1, intermediate 2, advanced 1, and advanced 2.





The short-term course is designed to teach students Korean intensively and expose them to Korean culture in a short period of time. The three-week course meets five times a week with 3 times of cultural experiences.

Course	Regular Course	Short-Term Course
Period	4 Semesters per year (10 weeks/semester)	3 Weeks during summer
Curriculum	Listening, Speaking, Reading, Writing	Korean lesson in the morning + Culture experience in the afternoon
Tuitions	1,450,000 KRW/semester (approx. 1,250 USD)	1,450,000 KRW/3weeks (approx. 1,250 USD) *Fees for tuitions, dormitory, culture class are included *Meals are not included



# Seoul, Republic of Korea



Seoul, the capital of Republic of Korea is the center of nation's economic, financial, logistical and business infrastructure. This means that Seoul is also where most of Korea's outstanding human resources are concentrated.

As a bustling metropolis, Seoul is one of the most exciting and dynamic cities in the world, attracting people from many countries around the globe to engage in cultural, scientific, and business enterprises. Seoul is a very unique metropolis combining historical sites with cultural facilities and exciting shopping districts.

Geographically, Seoul is strategically located in the center of the Northeast Asian economy and offers the area one of the world's best-educated workforces. Among its growing industries are conventions, tourism, digital content, fashion, design, R&D, finance, and retail distribution

## Ranking of Seoul

1

World Electronic Government :  
1st place  
UN Survey 2008, 2012

1

Labor Productivity :  
1st place  
OECD 2011

6

World City Competitiveness Index :  
6th place  
Mori Foundation Japan, 2012

8

Global City Index : 8th place  
A.T.Kearney and  
Foreign Policy Magazine 2012

8

Business Friendly Country :  
8th place  
World Bank 2012

5

Convention-Friendly Cities :  
5th place  
For three consecutive years (2010-12)  
UIA 2012

9

Competitiveness Index 2010 :  
9th place  
World City Competitiveness Report  
(Social Science Center, China)

3

Economic Competitiveness :  
3rd place  
Newsweek 2011



## Living Costs in Seoul

Seoul is one of the most exciting and dynamic cities in the world. However, food, housing and other living expenses can be high in Seoul, just like any other major metropolis. Although your living expenses may vary according to circumstances and lifestyle, the list below provides a guideline for general expenses for a student living in Seoul.

<b>Accommodation</b>	180,000 ~ 500,000 KRW/Month	160 ~ 450 USD/Month
<b>Food</b>	220,000 ~ 450,000 KRW/Month	200 ~ 400 USD/Month
<b>Public Transportation</b>	50,000 KRW/Month	45 USD/Month
<b>Mobile Phone</b>	30,000 KRW/Month	28 USD/Month
<b>Books, Supplies &amp; Other Activities</b>	100,000 KRW/Month	90 USD/Month
<b>Average Total Costs per Month</b>	<b>580,000 KRW/Month</b>	<b>520 USD/Month</b>



# Greetings from the President



KMU will dream together with you!  
Your dream might stay a dream, but it can come true  
when it is shared with others.  
KMU will go through changes, create opportunities,  
and face challenges with you.

---

Welcome to Kookmin University!

Kookmin University, the first private university after Korea's independence, was established by Mr. Shin, Ik Hee and other main members of the Shanghai interim government of Korea.

Deeply rooted in the four founding principles, humanism, nationalism, culturalism, and industrialism that Mr. Kim, Sung Gon had emphasized, Kookmin University has grown into a fixture of the academia of Korea with 23,000 students enrolled.

In the midst of the ever changing academic climate and social changes, with selfless dedication from all members of KMU, we strive to become a globally recognized institute by making a world of academia unique to none other than KMU as well as being bold to the changes and challenges ahead.

Now universities of a knowledge based society have entered into a competition that is more severe than ever before. KMU is trying to solidify its educational foundation to maintain our role as a leading player by employing three operative goals such as attracting outside funding, establishing the standards of reasonable distribution of resources, and building an efficient structural system.

Your dream does not have to stay a dream because your dream can turn into a reality when it is shared with others. KMU will dream together with you. KMU will go through changes, create opportunities and face challenges with you. Nothing is impossible when you are with KMU. We will make KMU a university people want to be a part of, graduates are proud of, and that values hard work and quality education rather than what is just shown on the surface.

Today I urge you to be a part of KMU as we go through each new challenge and turn it into an opportunity!

**Yu Ji Soo**, Ph. D  
President



# Campus Map



Sungkok Library



Global Center

Innovation &  
Partnership  
BuildingCollege of  
Engineering

Student Union



Building 7



College of Arts



Dormitory



Guest House



Gymnasium

Myoungwon  
Folk HouseCollege of  
Natural Science

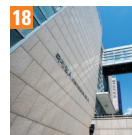
Hyungsul Hall



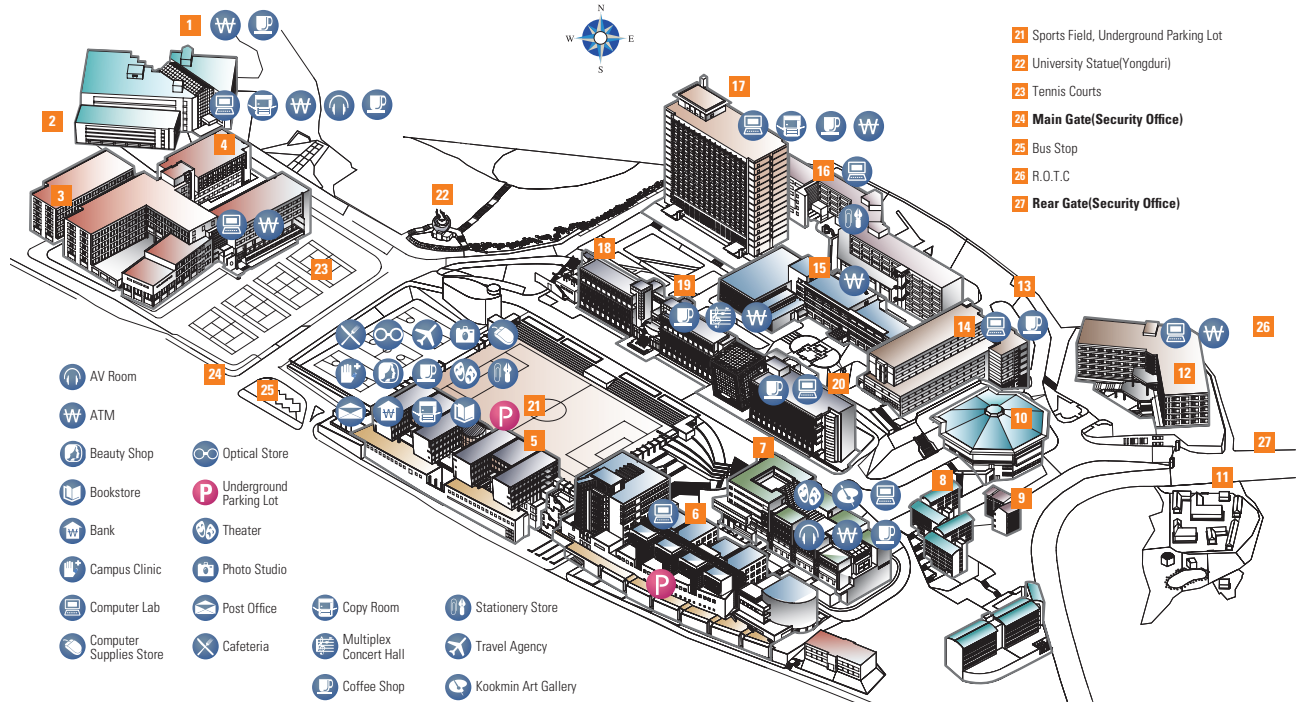
College of Law

Administration  
HallCollege of  
Design

Bugak Hall

College of  
Economics and  
Commerce

International Hall

College of  
Business  
Administration

# Transportation

## Subway Line No.3 (Orange)

Get off at Gyeongbokgung Subway Station and take City Buses (No. 1020, 1711) to KMU at Exit No.3

## Subway Line No.4 (Blue)

Get off at Gyeongbokgung Subway Station and take City Buses (171, 1213, 7211) to KMU at Exit No.3

## Subway Line No.5 (Purple)

Get off at Gwanghwamun Subway Station and take City Buses (No. 1020, 1711) at Exit No.2

---

## Kookmin University

77 Jeongneung-ro, Seongbuk-gu, Seoul, Korea (02707)

**Phone** +82-2-910-5833~5835

**Fax** +82-2-910-5830

**Website** <http://english.kookmin.ac.kr>

<http://iaten.kookmin.ac.kr>

<http://iie.kookmin.ac.kr/english>









**국민대학교**  
KOOKMIN UNIVERSITY

77 Jeongneung-ro, Seongbuk-gu, Seoul, Korea (02707)

**Phone** +82-2-910-5833~5835 **Fax** +82-2-910-5830

**Website** <http://english.kookmin.ac.kr> | <http://aten.kookmin.ac.kr> | <http://ie.kookmin.ac.kr/english>